

2023/1

HOLP[®]

it's Vario!



The RotoTop Story

Holp's path to becoming a pioneer

In 2001, Holp GmbH began distribution of their first in-house developed product - Variolöffel. When presenting Variolöffel in Denmark and Sweden in the summer of 2003, Günter Holp became aware that there is a directive in Sweden stating that there has to be at least one tilt rotator present at each construction site. Quickly it became clear: Without a comment in the tender documents, the tilt rotator would not be used in the whole of Germany.

Holp had already dealt with the topic of tilt rotators as early as 1992: First test runs with a tilt rotator at Holp's own earthworks company resulted in cylinder damages. Consequently, the cylinder was replaced by a piece of metal and the test run completed with rotation only. In doing so, it became evident: Rotation, as such, is fully sufficient and one just has to correctly position the bucket in accordance with the application.

Having developed further attachment tools, Günter Holp turned yet again to the topic of rotation on the excavator in 2005.

Following several failed attempts to get into business with Swedish manufacturers, the decision was made to start the project "Economic wrist on the excavator" as an in-house design. While, in Sweden, hoses were still run along the outside of the tilt rotator, Holp planned with a rotary joint for the German market: In order to provide every attachment tool with limitless rotation, the excavator's full specific output in litres needed to be pumped through.

As early as 2004, the fully hydraulic quick-coupler was regarded as the "future design". Holp realized quickly that a large rotary joint was required and it had to be adapted to this situation. As, at that time, there was nobody who could pump such a large quantity of oil through such a small space, this technology was simply developed by Holp themselves. In Sweden, this idea was merely smiled at in a patronizing way and dismissed as being too expensive. Rather than prevent Holp from trying, this only fuelled their efforts.

Use of an 8-way rotary joint - nowadays the standard at Holp - was simply unthinkable back then. It was the result of years of development with only one goal in mind: Pumping a maximum amount of oil to the attachment tool.

"It is exactly this pioneering spirit which has made our product a sure-fire success and the market leader in rotation technology!" – Günter Holp




ROTOTOP®

ROTOX®

MULTIGRIP®

PROFILLÖFFEL®

VARIOLÖFFEL®

BANKETTLÖFFEL®

CUTWHEEL®

QUICKON®

KRANFIX®

Contents

The RotoTop Story 2

RotoTop

Rotation in perfection	4
Rotation only - very convincing	6
Tilt vs Rotation	8
RotoTop with tilt underneath	11
Our modular system	12
System comparison	15
RotoTop - for all purposes	16
Recoverability	18
Clever down to the last detail	20
Our RotoTop - a fitting complete package!	23

Test-Arena

Testing - Learning - Experiencing 24

Products

MultiGrip	28
ProfilLöffel	30
Variolöffel	32
BankettLöffel	34
CutWheel	36
QuickOn	38
KranFix	40
Technical Data	42

About Us

Holp GmbH	44
Excavator Tuning Shop	45

Rotation in perfection

Maximal efficiency through both maximal flexibility and breakaway forces

TOP Largest amount of oil

TOP Low weight

TOP Robust design

TOP Full flexibility

TOP Simple operation

TOP Performance boost guaranteed

ROTOTOP



Info & Videos



Rotation only - very convincing

Spatial movement is sufficient for 100% of all tasks on any standard construction site

Thanks to our past, we have the DNA of excavator operators. We know what a machine operator needs on site: This is why our RotoTop is easy to handle. Any operator can not only learn how to work productively with it within a very short time, but may achieve performance increases of at least 10% to 50%. No damages are to be expected as the RotoTop is fully boxed and features a robust design. Combining our RotoTop with the existing excavator kinematics allows you to perform about 95% of the movements possible with a tilt rotator. For practical usage this means: On a standard construction site, you can achieve a performance increase of 10% in earthworks, of 30% in sewer construction, and even 50% or more in gardening and landscaping. The RotoTop is therefore always the most economical solution due to its low design.



Info & Videos



Tilt vs Rotation

RotoTop provides all attachment tools with limitless rotation



Info & Videos



ROTOP
TILT UNDERNEATH

RotoTop with tilt underneath

Exciting efficiency -
with all attachment tools at all times

Rotation - the most economic solution

All work on a standard construction site can be carried out most efficiently with rotation due to low construction height and weight, without any significant power losses. When rigidly mounted, the operator may quickly get used to his "wrist" and use it optimally.

Tilt Rotator/Sandwich - many disadvantages

Using a tilt rotator always means accepting both a greater dead weight and a very high construction height which negatively affect the over-all performance and break-away forces of the excavator. Additionally, there are, most of the time, extra costs involved, such as for retrofitting the controls in the excavator.

Tilt - better underneath the RotoTop

For special applications that require even more movement capacity, the tilt should be attached underneath the RotoTop. This may initially sound unusual, but it is very economical. In doing so, you can attach the tilt only when you actually need it. Positive effect on the construction site: The tilt in the sandwich position can be used as a flexible extension of the excavator's boom. This brings about decisive advantages e.g. in sewer construction.



Info & Videos



RotoX Tilt Rotator

With our RotoTop as the centrepiece

RotoX - tilting without cylinder

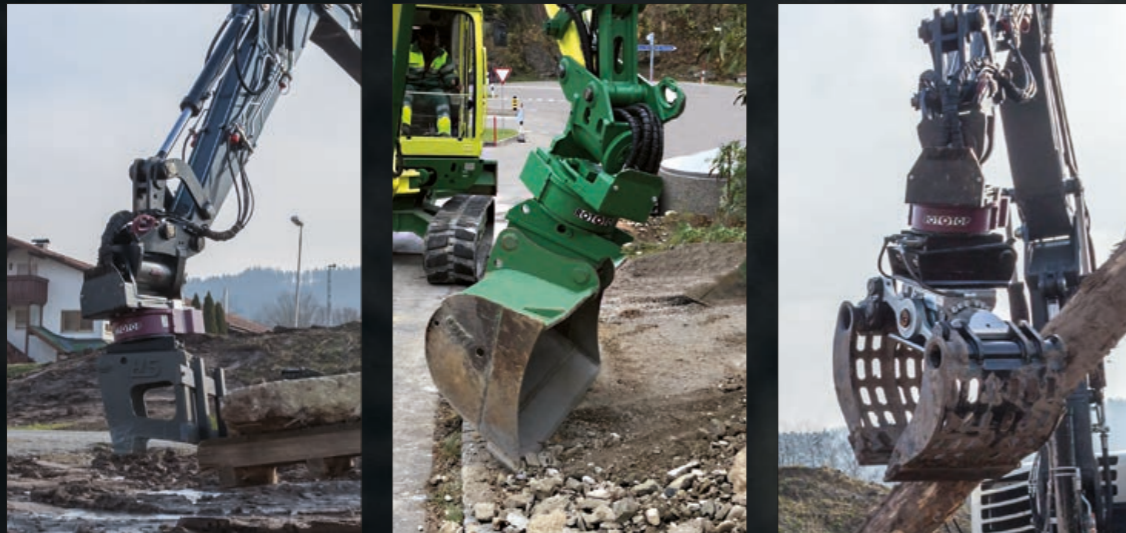
For those who do not have a strong focus on earthworks, loss of tear-out forces, great construction height as well as additional weight do not play the biggest role with a tilt rotator. That's why we developed our tilt rotator RotoX without cylinders. Neat and clearly designed with no protruding parts and thus less prone to damage, yet with a bigger swivel angle. This development has been in use since 2007.

Tilt module can be retrofitted

Start with rotation only - also with a tilt rotator! Owing to its modular design, the tilt can also be retrofitted above. Furthermore, it is possible to retrofit the RotoTop simply to a RotoX, even after several years. All that needs to be done is to exchange the mounting plate for a tilt module. It's your decision: A low design with a swivel angle of 70-75° or a higher design with 85-90°.

Additional value of a tilt rotator

For many working in industry and crafts, a tilt rotator's additional value is questionable - after all, it is well-known that rotation alone is fully sufficient for all standard construction sites. It is only for special applications that a tilt rotator brings about additional movement capacity - for all other applications, this doesn't save further time, but leads to a considerable loss of power.



Info & Videos



TILT ABOVE

ROTOX

RotoTop - the market leader

In order to be able to use the RotoTop's full flexibility at any given time, we advise not to use a sandwich solution. **Our recommendation:** A rigidly mounted RotoTop! Due to its robust design, our RotoTop has all it takes for economic rigid mounting right from the start. This is what has made it Germany's market leader - and not without reason:

Light-weight – the weight of the drive is below 23 kg (excavators up to 2.75 t) and at a maximum of 426 kg (excavators up to 45 t).

Low – the housing height ranges from 88.5 mm (excavators up to 2.75 t) to a maximum of 213 mm (excavators up to 45 t).

Warranty – 3 years/3,000 OpHrs with rigid mounting to excavator.

Rotary joint – up to 8-ways for complete configuration of a fully hydraulic quick-coupler: Without perceptible performance loss - thanks to flow-optimised construction incl. own bearing.

Robust – approval of all attachment tools in the respective excavator class, also for hammer and rock cutter. Overhaul and buy back - possible with a RotoTop.

Sandwich - complex construction site logistics

This is a point often underestimated. A tilt rotator as a sandwich is not a light-weight and must be brought to the construction site by means of a flat bed truck or trailer. Once on site, the tilt rotator will be unloaded and stored and is often not ready for use as it is "out of reach" of the excavator. Often, it remains permanently mounted to an excavator. Both options are not very economical and should be avoided.

Central figure – the operator

Human beings are creatures of habit: Operators can only get used to their "wrist" on the excavator and achieve performance boosts if they keep using it. In order to reach an optimal cost-benefit effect, it is thus enormously important to rigidly mount the RotoTop to the excavator.

Why can a RotoTop do about 90-95% of what a tilt rotator can do?



Explanation: Two movement axes are standard with excavators.

Every excavator already has two movement axes. Rotation adds a third axis. It is this third axis which enables spatial movement and brings about a great many additional options. The tilt provides the fourth axis and eventually adds only 5-10% of additional value. The tilt is a very high design and makes handling for the operator very complicated and thus mostly slower.

Basic prerequisites for rigid mounting

A large rotary joint for oil and electric current as well as options for 2D and 3D controls are the basic prerequisites for rigid mounting! The German market - with its countless attachment tools - represents a challenge! That's why at Holp we don't have highflow rotary joints, but rather "MEGA-FLOW" rotary joints. In this way, every quick-coupler has 360° limitless rotation and it doesn't matter whether it is mechanical, hydraulic or fully hydraulic. Hence, all attachment tools can be mounted without hesitation to an excavator equipped with a RotoTop. Oil and electric current can be fed through to the attachment tool without any problems. For 2D and 3D controls, you need a rotary encoder which can be retrofitted to all RotoTops.

Cost-effective attachment possible without joystick retrofitting!

Our modular system

Tilt – the origin of the tilt is the swivel bucket. The Powertilt has been available on the market for a long time now as a standard attachment to excavators. Thus, it is wide-spread in its use and well-known to most operators.

Tilt rotator – can seemingly do anything, brings disadvantages though as well. Its high design, the large weight, small rotary joints and warranty limits for tough operations often lead to a sandwich solution.

Rotation – pure rotation is often underestimated, but is the most economical system, especially with rigid mounting. Flexibility in combination with a low

design and weight provide for a maximum performance increase. The RotoTop's large rotary joint also allows all attachment tools to be rotated and its high-quality and robust components mean that it can easily endure even under tough conditions. The RotoTop will consequently pay for itself in no time!

Sandwich – only rarely a good idea! Maximum height and weight may lead to big disadvantages. Depending on the task, operators have to constantly attach and remove the tilt rotator. Not only does this limit flexibility in combination with other attachment tools, but also brings about the issue that operators cannot get used to their "wrist".

The centrepiece
Rotation in combination with the largest rotary joint for oil/power/data

<p>Rigidly mounted rotation provides 100% movement capacity for standard construction sites</p> <ul style="list-style-type: none"> + spatial movement + fully boxed + low weight + robust design + low construction height + little loss of power + up to 50% performance increase + guaranteed better performance with simplest tasks 	<p>RotoX - tilt rotator with very low design, rigid mounting</p> <ul style="list-style-type: none"> + high movement capacity + for special tasks + construction height 100mm lower with 10 t excavators - less oil* - not for the toughest of uses - high weight - high power loss 	<p>Rigidly mounted rotation provides 100% movement capacity for standard construction sites</p> <ul style="list-style-type: none"> + spatial movement + fully boxed + low weight + robust design + low construction height + little loss of power + up to 50% performance increase + guaranteed better performance with simplest tasks 	<p>RotoX - tilt rotator, rigid mounting</p> <ul style="list-style-type: none"> + high movement capacity + for special tasks + large oil quantities - not for the toughest of uses - high weight - high power loss - limitations with tough uses - high weight permanently on the excavator 	<p>Quick-coupler</p> <ul style="list-style-type: none"> + no power loss - 0% movement capacity <p>With RotoX tilt rotator in sandwich design</p> <ul style="list-style-type: none"> + high movement capacity - limitations with tough uses - frequent changes necessary - high weight - very high design - extremely high power losses
---	--	---	---	--

*The low design can pump through less oil than the normal design – Example: 10 t excavator a maximum of 90 litres/min with a low design ΔP 10 bar. The normal design is identical with the specifications of the RotoTop = max. 200 litres/min. ΔP 10 bar.

In combination with a swivel bucket perfect for the transition phase to rotation only or for special jobs

- + more movement capacity
- too wide for sewer construction

Info & Videos



RotoTop - for all purposes

A success story - for more than 15 years

3-years warranty for all applications

A rigidly mounted RotoTop is convincing due to its robust building design which remains unaffected even by vibrations. Truly unique is our warranty (3 years/3,000 OpHrs). Also valid for tough usage such as with a vibrating plate, hydraulic hammers or when working with a rock cutter! Manufacturers of rotary cutters worldwide rely on our RotoTop as original equipment. This is why entrepreneurs may also trust our RotoTop's unique quality, mount it rigidly and use it 100% at any given time.

Designed for more than just one excavator's life

Thanks to our robust design, we achieve an exceptionally long service life: When an excavator's service life comes to an end, this is not the case for the RotoTop. We overhaul your RotoTop and give it a "second life" - and that for only 20% of its purchase price plus another year's warranty.

Unique recoverability

Our RotoTop's special value shows in its unique quality which makes an extremely long service life possible. For the entrepreneur, this means not only a sustainable investment, but also very quick amortisation and possibly a high resale value.

Solid development that is truly convincing

We gained a host of experience from numerous applications under the most extreme conditions and special operations worldwide. It was our aim to optimally adapt any RotoTop size to the respective excavator class. New ways are time-consuming: We needed 9 years for the first 7 sizes. Further additions to our product range, with two sizes above and below the previous range, required another 2 years of development. For our customers, though, it was well worth it!

We offer a fine-tuned product range for all excavator classes ranging from 0.6 t to 45 t – for all usages. Even with the toughest of operations with vibrating plate, hydraulic hammer and rock cutter – our RotoTop can manage all of this! This is emphasized by our 3-year warranty on all rigidly mounted RotoTops.

Unique rotary joints for each excavator class

Even vibrating plates, mulchers and many other tools work smoothly thanks to our large rotary joints which pump large oil quantities effortlessly with low dynamic pressure to the attachment tool. Our 8-way rotary joint offers the possibility to operate any fully hydraulic quick-coupler without any noteworthy power losses - and that at full capacity at any time. Operators may hence get used to their "wrist", utilize it at 100% and allow it to become second nature to them.

Info & Videos

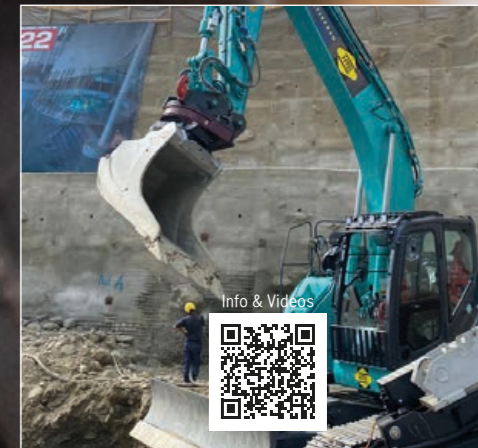


Recoverability

Our RotoTop is designed for more than one excavator life



In 2015, a RotoTop RT301 was delivered to HTB-Arzi Spezialtiefbau. Their excavator plus quick-coupler was taken out of service after 6,000 OpHrs of tough operations in pure rock in 2020. According to their operator, the rotary drive RotoTop, however, still felt like new. The latter was returned to us with considerable signs of wear. The drive's housing only got a professional facelift after the check-up and was then fitted with a new fully hydraulic quick-coupler and an 8-way rotary joint. The RotoTop could thus be cost-effectively overhauled. It was subsequently returned to HTB, where it was reattached to a new excavator, ready for new operations and tasks.



Clever Down to the Last Detail

Individual configuration · cost-effective attachment
no joystick retrofitting necessary

Rotary quick-coupler
For excavator types ranging from 0.6– 45 tonnes
360° limitlessly rotatable

Low fitting to the quick-coupler
Up to 2.75 t = 88.5 mm
at 45 t = 213 mm

Low additional weight to the quick-coupler, 23 - 426 kg depending on the type

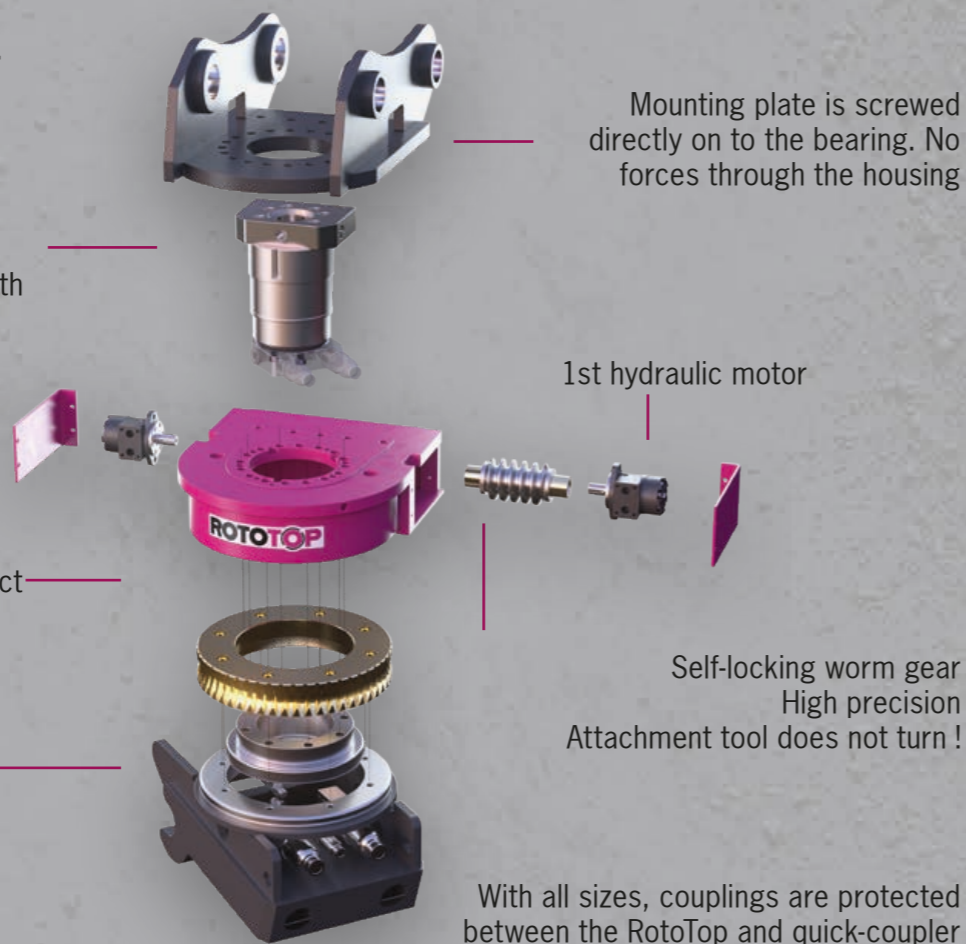
Can be directly mounted to the excavator boom. Also available as a sandwich design with a quick-coupler (above and underneath).

Rotary joint
Operating pressure of 400 bar
Up to 8-way rotary joints
Current feedthrough possible with all options

2nd hydraulic motor possible *

Fully encapsulated box to protect hydraulic motors

Extremely shock-resistant bearing for tough usage on rock cutters, ripper buckets, hydraulic hammers etc.



Mounting plate is screwed directly on to the bearing. No forces through the housing

1st hydraulic motor

Self-locking worm gear
High precision
Attachment tool does not turn !

With all sizes, couplings are protected between the RotoTop and quick-coupler

* Innovative technology makes various options possible

- Rotary encoder for 2D and 3D controls (available for all common systems)
- 2nd motor for more power/less speed (e.g. drilling unit / felling grabs)
- 2. motor with Power Rotation Control (PRC) for more power and speed (Functions like a 2-gear drive, automatic switching depending on the power required)

ROTOTOP®

	RT022	RT032	RT062	RT092	RT121	RT201	RT201 HD	RT251	RT301	RT301 HD	RT301 HD+

For excavators up to*	0.6-2.5 t	1.9 - 3.9 t	3.5 - 6.5 t	6 - 10 t	7 - 12 t	10 - 18 t	16-20 t	17 - 27 t	25 - 30 t	29 - 36 t	35 - 45 t
Dead weight**	23 kg	25 kg	57 kg	73 kg	104 kg	156 kg	163 kg	229 kg	315 kg	409 kg	426 kg
Width A	172 mm	172 mm	199 mm	221 mm	232 mm	259 mm	259 mm	291 mm	360 mm	360 mm	360 mm
Width B	122 mm	122 mm	147 mm	170 mm	204 mm	259 mm	259 mm	291 mm	360 mm	360 mm	360 mm
Total width A+B	294 mm	294 mm	346 mm	391 mm	436 mm	518 mm	518 mm	582 mm	720 mm	720 mm	720 mm
Length C	297 mm	297 mm	385 mm	420 mm	459 mm	565 mm	560 mm	652 mm	786 mm	786 mm	786 mm
Construction height	88.5 mm	88.5 mm	122 mm	142 mm	162 mm	164 mm	176 mm	164 mm	164 mm	213 mm	213 mm
Max. break-away and tearing forces	32 kN	32 kN	48 kN	70 kN	80 kN	105 kN	130 kN	180 kN	230 kN	270 kN	310 kN
Rotation grapple rotary piping	9 - 16 litres	9 - 16 litres	20 - 36 litres	24 - 44 litres	25 - 45 litres	42 - 67 litres	42 - 67 litres	52 - 72 litres	51 - 77 litres	51 - 77 litres	51 - 77 litres
Rotations/min	5 - 9 r/min	5 - 9 r/min	5 - 9 r/min	5 - 9 r/min	5 - 9 r/min	5 - 8 r/min	5 - 8 r/min	5 - 7 r/min	4 - 6 r/min	4 - 6 r/min	4 - 6 r/min

Rotary joints

Channels	2-way	3-/6-way	6-way	6-way	6-way	6-way	6-way	6-way	6-way	6-way	6-way
Flow rate***											
Standard	70 l/min	70 l/min	120 l/min	120 l/min	120 l/min	250 l/min	250 l/min	250 l/min	250 l/min	250 l/min	250 l/min
HighFlow	-	-	-	-	-	280 l/min	280 l/min	-	-	-	-
MegaFlow	-	110 l/min	-	200 l/min	200 l/min	350 l/min	350 l/min	350 l/min	350 l/min	350 l/min	350 l/min
Channels	-	-	8-way	8-way	8-way	8-way	8-way	8-way	8-way	8-way	8-way
Flow rate***											
Standard	-	-	120 l/min	120 l/min	120 l/min	250 l/min	250 l/min	250 l/min	250 l/min	250 l/min	250 l/min
HighFlow	-	-	-	-	-	-	-	-	-	-	-
MegaFlow	-	-	-	160 l/min	160 l/min	280 l/min	280 l/min	280 l/min	280 l/min	280 l/min	280 l/min

ROTOX®

RotoX RT + PowerTilt	PT030.031	PT070.062	PT100.091	PT180.201	PT240.251	PT300.301	PT465.301/HD
For excavators up to*	2 - 3 t	3 - 7 t	7 - 10 t	10 - 18 t	18 - 24 t	24 - 32 t	32 - 45 t
Swivel angle up to 2x	75 - 90°	75 - 90°	75 - 90°	55 - 60°	55 - 60°	55 - 60°	55 - 60°
Construction height	On request, varies according to excavator manufacturer and swivel angle.						

* Varies according to manufacturer. Please bear breakaway and tearing force in mind!

** RotoTop with a flange ring, no rotary joint

*** at a pressure difference $\Delta p = 10$ bar

For all rotary joints, current feedthroughs with 12 leads freely configurable and data transmission via bus system possible. One oil channel is omitted for that.



Our RotoTop - a fitting complete package!

Tried and tested in thousands of operations at customers worldwide, ranging from rootstock clearing in gardening and landscaping, rock works to challenging underground engineering. Thanks to the large rotary joint, all conceivable attachment tools can be used.

Testing-Learning-Experiencing

In our test arena in Murrhardt-Fornsbach/Germany

In our 7,000 sqm Test Arena in Murrhardt-Fornsbach/Germany you can test various different attachment tools at 13 stations. We have several types of excavators on site at your disposal at any time. These stations enable you to personally “experience” the advantages our RotoTop brings about - and that in construction site conditions: The ease of handling, the potential for cost-cutting, the time savings, and the profitable competitive advantages above all. With our activities under the slogan “Excavator tuning made by Holp”, we would like to make you enthusiastic for our technology.

By the way: Excavator tuning has absolutely nothing to do with engine performance. Where we begin, it is not about a 2-3% performance increases, but rather about guaranteed 10% increases or a 10-fold performance boost.



This means: Holp products on the boom add decisive advantages with regard to the economic efficiency of an excavator!

Please put our attachment tools to the test and gain some first-hand live experience with our RotoTop in combination with MultiGrip, VarioLöffel, ProfilLöffel, swivel bucket as well as tilt underneath. In addition to that, it is possible to test the attachment tools of our partners DMS, Kronenberger, Rockzone, UAM and Tibatek in the Test Arena. You can choose from rock cutters, hydraulic hammers, grapples, screener crushers and mulchers and make this testing day your perfect day.

Test and compare our systems in our TestArena at any time! Please register even today for one of our trainings or make your own individual appointment.

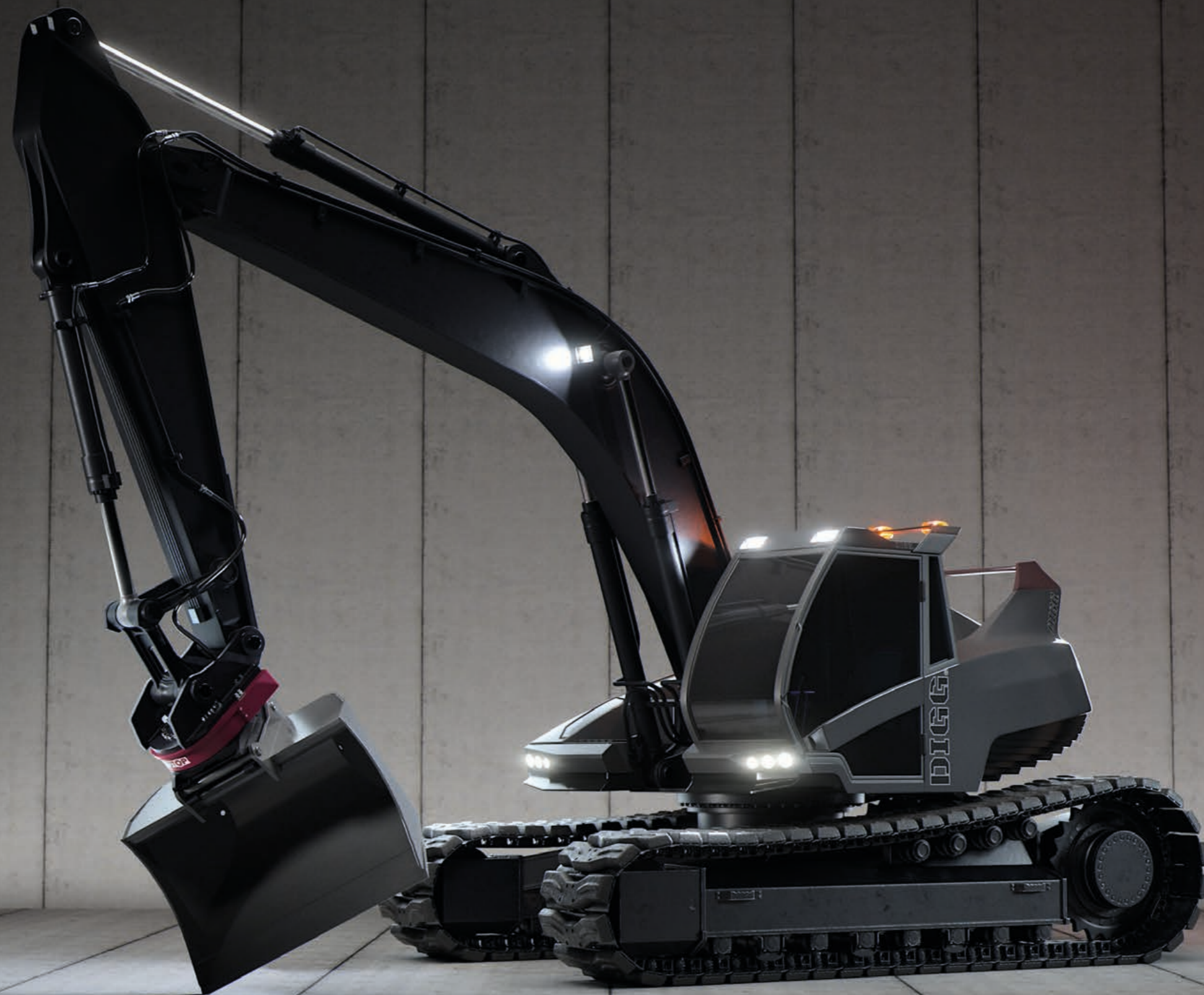
Information, inquiries & registration:
holp.eu // vertrieb@holp.eu // +49 7192/9336-120



Info & Videos



DIGG® DIGG®



The “Fingers” on the Bucket

More power through secure grabbing

TOP High safety

TOP Enormous flexibility

TOP Low dead weight

TOP
MULTIGRIP



MultiGrip – the safest way to grip

Our MultiGrip is a truly unique attachment tool combining both the backhoe and grapple tools. MultiGrip is available in 12 sizes ranging from 0.6 to 25 tonnes of operating weight. Not only does it provide a multitude of gripping options, but also scores with safety and performance thanks to the thumb principle. This is down to the fact that even when lifting loads over high loading edges, no material is dropped. In this way, damage and unnecessary loading cycles can be prevented. Because: Once safely in the bucket, nothing may fall out once the bucket's been tipped in. When excavating or in underground engineering, the patented clamping technique makes it possible to fill the bucket with up to 30% more soil. The stable construction impresses with its low weight and durability.



Info & Videos



In Top Form for Rotation

Robust – quick – light-weight – economic

PROFILLÖFFEL[®]



TOP Optimal design

TOP Low dead weight

TOP Precise handling

ProfilLöffel – gets your excavator in top form

The diverse tasks in the construction of roads, gardening and landscaping require ideal equipment. Combined with our rotary drive RotoTop, ProfilLöffel allows you to work and operate in an immensely flexible and precise way. Excavating while profiling, modelling and troweling - and all these tasks in just one work flow. With this custom-made combination of RotoTop and ProfilLöffel your excavator is guaranteed to be in top form - and that saves time and makes for top-most efficiency. Its optimal design with the far protruding cutting edge and consequently low bottom, put you in a position for special uses. The sloped sides are multi-edged and enable a better flow of material, as nothing is compacted in the bucket and thus makes for perfect emptying. It also allows safe working even in confined spaces with little distance to walls and boundaries.



Info & Videos



Universal tool for working efficiently

Up to 10 times the power possible!

VARIO LÖFFEL[®]

TOP Two work openings

TOP 10 times the power

TOP Versatile in its use

VarioLöffel – the most universal excavator bucket on the market

Our VarioLöffel makes excavators ranging from 2.0 to 25 tonnes and other machines, such as multi-purpose or forestry equipment, more versatile and thus more economical in use. Whether in earthworks and sewer construction, gardening and landscaping or roadmaking, our VarioLöffel makes fast and flexible working in all directions possible even on tight construction sites or alongside walls, kerbs and pipes. VarioLöffel is super flexible as it is equipped with both a V-shaped and a rectangular opening. It is unbeatable, however, when mounted to the excavator in combination with our 360° limitlessly rotatable RotoTop.

Whilst cleaning and digging ditches, the bucket's V-shaped opening makes it possible to achieve up to 10-fold performance increases for instance when dragged. Moving trees and bushes is simplified enormously. The rectangular opening makes it easier to trowel roadway shoulders and to trace embankments. Paths can also be optimally laid out and drained. As the rounded section is modelled after commercially available shovels, some hard manual labour can be saved.



Info & Videos



The specialist for nice and tidy road shoulders

Maintenance of the roadside - also underneath crash barriers[®]

BANKETTLOFFEL



TOP Flexible use

TOP High efficiency

TOP Extremely robust

BankettLöffel – high efficiency due to drag operations

Like all of our buckets, BankettLöffel is completely made of Hardox and for this reason tough and persistent. It has got a removable cover which enables the operator to also screed directly underneath crash barriers which means that the whole shoulder can be worked in one go. In order to achieve better stability and durability, BankettLöffel is deliberately open on one side only. Combined with our rotary drive RotoTop, BankettLöffel becomes an exceptionally flexible attachment tool which can operate both in front of and behind crash barriers and reach everywhere on the shoulder to create a homogeneous surface. If even more flexibility is required, a sandwich design with a tilt is possible. Due to the external frame, no reinforcements of the bucket are necessary and an optimal material flow in the bucket is achieved. Our BankettLöffel is usually dragged in operations and thus achieves a very high output.

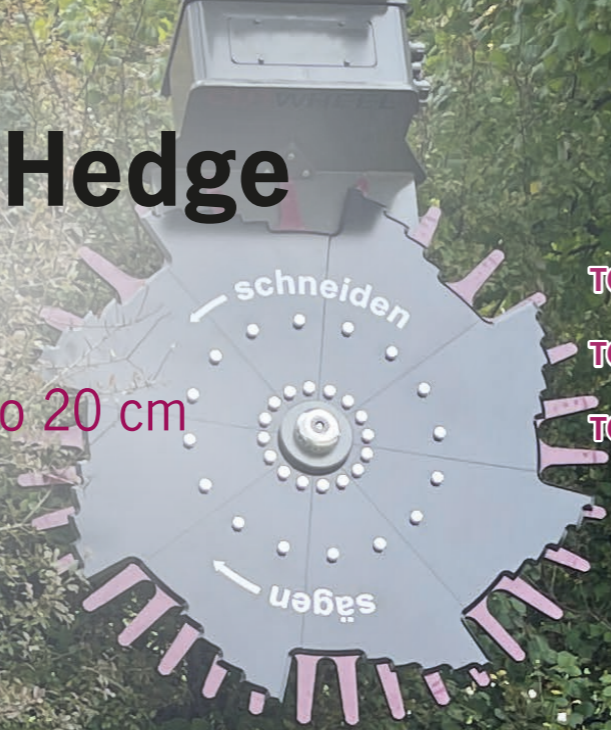


Info & Videos



The Adaptable Wall Hedge Trimmer

Cutting shrubs and wood from 3 mm up to 20 cm



TOP Extremely powerful

TOP Enormous flexibility

TOP User-friendly

CutWheel – economical cutting and sawing

CutWheel cannot be compared to other hedge trimmers, since it effortlessly cuts shrubbery and wood with diameters ranging from 3 mm up to 20 cm. CutWheel brings about great flexibility for the user. Working in two cutting directions is made possible by the infinitely adjustable counter blade. The cutting wheel which can be rotated, however, not only cuts, but also saws. CutWheel has the power needed for simple hedges and the power suitable for cutting stronger hedge banks and trees. While working, CutWheel can be set to different sizes without the operator actually leaving the excavator's cabin. Operators may simply set the desired diameter from their seat and consequently work their way through shrubbery in a much faster way. Irrespective of whether you deal with vegetation on the sides of a forest path or hedges alongside a road. This not only renders your operations more efficient due to a continuous work flow, but brings about a significant plus in safety for the operators who don't have to leave the excavator on streets and paths with a lot of traffic.



Info & Videos



No damages – no down time!

The “patented solution” for easy coupling

TOP Long service life

TOP No oil losses

TOP Quick coupling

QuickOn – the solution for easy coupling

Exchanging one attachment tool for the other must be fast in everyday operations. We often see a build-up of residual pressure in hydraulic hoses following machine use which makes it nearly impossible to connect hose fittings by using one’s physical strength only. Using a hammer in this situation would cause damage to the coupling and a possible and environmentally harmful hydraulic oil leakage. This problem is intensified, if the coupling is hard to reach, or by the fact that the attachment tool’s piping is subject to weather conditions and thus suffering. The solution for this challenge present the QuickOn tongs.

Safe and damage-free coupling is made possible in all situations and with all machines and types of couplings - and it works very simply: The coupling is gripped with the two robustly forged clampshells and then squeezed. With the pressure released, easy and effortless use of the coupling’s locking mechanism is possible. Thanks to its large opening width and the gripping adapters made of fine-grained steel, which are important for small couplings, QuickOn is suitable for all commonly used coupling sizes and makes.



Info & Videos



Change More Quickly – More Possibilities

Quick-coupling system for forest cranes

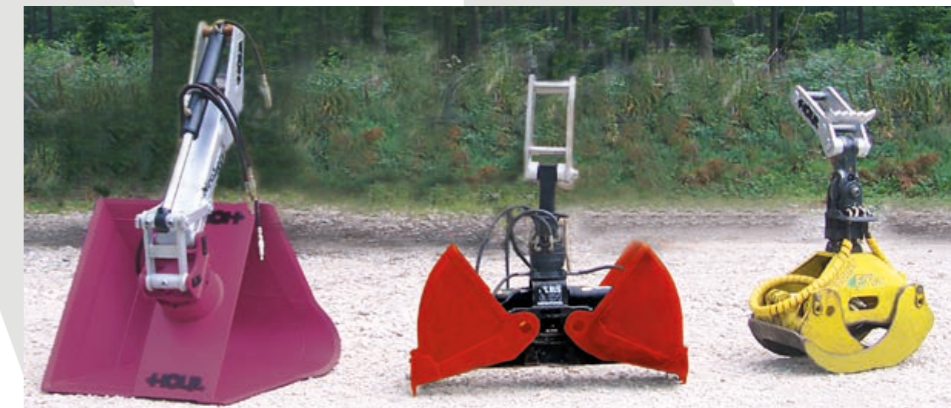
- TOP Flexible use**
- TOP Optimal power transmission**
- TOP Reduced idle times**

KranFix – turns your crane into a proper all-rounder

KranFix is the only tool replacement system for cranes where the attachment tool can be firmly attached to the forest crane. This enables you to quickly and easily change swinging and rigidly mounted tools on the crane. Rigidly mounted attachment tools such as mulchers, VarioLöffel, grapple saws etc. may be easily attached to the quick-coupler linkage. This technology guarantees optimal power transmission into the crane and a long service life. Our KranFix makes optimal use of your tool's capacity possible, greatly reducing idle times. This, after all, turns the forest crane into an excavator!

KranFix is a convincing solution - not only due to its great flexibility, but also its low purchasing price. This means that KranFix pays for itself in a very short time due to the wide range of possible applications.

KRANFIX



Info & Videos



Technical Data

MULTIGRIP

Type	Excavators up to (t)	Dead weight ca.* (kg)	Capacity SAE (litres)	Cutting width (mm)	Opening (A) max.(mm)
MG.015.050	1.5	55	33	500	340
MG.022.055	2.2	80	53	550	530
MG.030.060	3	150	78	600	730
MG.045.060	4.5	165	114	600	825
MG.060.060	6	185	150	600	1,010
MG.075.080	7.5	250	237	800	1,115
MG.095.080	9.5	345	252	800	1,200
MG.120.080	12	380	280	800	1,300
MG.150.100	15	670	524	1,000	1540
MG.190.100	19	730	689	1,000	1,620
MG.220.100	22	850	779	1,000	1,690
MG.250.100	25	970	895	1,000	1,750

* All weight specifications incl. mounting plate, suitable for Lehnhoff / Available for excavators ranging from 0.8t - 25t • other cutting widths on request

PROFILÖFFEL

Type	Excavators up to (t)	Dead weight ca.* (kg)	Capacity SAE (litres)	Cutting width (mm)	Back width (mm)
PL.010.080	1.8	64	95	800	400
PL.020.090	2.5	93	120	900	500
PL.040.110	4	130	130	1,100	680
PL.060.120	6	170	200	1,200	740
PL.080.140	10	290	340	1,400	800
PL.120.150	12	390	450	1,500	900
PL.140.170	16	510	665	1,700	1,100
PL.220.160	25	805	1,160	1,600	1,000

* weight incl. mounting plate, suitable for Lehnhoff

VARIOLÖFFEL

Type	Excavators up to (t)	Dead weight ca.* (kg)	Capacity SAE (litres)	Slope angle	Radius (mm) trench bottom
VarioLöffel without RotoTop					
VL 112.100	2 - 3.5	140 *	120	54°	150
VL 112.200	3 - 6.0	190 *	200	54°	150
VL 112.300	4.5 - 8.5	240 *	300	54°	150
VL 112.400	7 - 14	320 *	400	54°	150
VL 112.700	14 - 25	570 *	700	54°	150

VarioLöffel with RotoTop

VL 112.220	3 - 6.0	310 **	200	54°	150
VL 112.320	4.5 - 8.5	340 **	300	54°	150
VL 112.421	7 - 14	460 **	400	54°	150
VL 112.722	14 - 25	750 **	700	54°	150

* Weight specifications incl. mounting bracket, suitable for Lehnhoff ** Weight specifications when directly mounted to the bucket

BANKETLÖFFEL

Type	Excavators up to (t)	Dead weight ca.* (kg)	Capacity SAE (litres) incl. cover	Cutting width (mm)	Height (mm) total/banquet
BL.100.120	10	125	300	1,200	480/300
BL.145.140	15	206	700	1,400	610/300

* Weight specifications incl. mounting plate, suitable for Lehnhoff

CUTWHEEL

Type	Excavators up to (t)	Dead weight ca.* (kg)	Cutting width (mm)	Cutting height above ground (mm)	Oil quantity Oil pressure
CW.149.123	15	650	1230	150	80-90 L/min 180-200 bar
CW.099.099	10	500	990	130	40-45 L/min 180-200 bar

* Weight specifications incl. mounting plate, suitable for Lehnhoff

KRANFIX

Type	Quick-coupler 1	For attachment to e.g.:	Dead weight ca.
SW 351.001	Quick-coupler , swinging width 80 mm	Loglift, EPSILON alt	35 kg
SW 352.001	Quick-coupler , swinging width 99 mm	Loglift von F61-F121	36 kg
SW 359.004	Quick-coupler for Epsilon swing incl. hydraulic couplings	EPSILON M/S/	39 kg

Type	Changer cartridge 1	For attachment to e.g.:	Dead weight ca.
WK 451.101	Changer cartridge for log grapples or soil grabs with toothed ridge	SW 351/352/359	35 kg
WK 451.102	Changer cartridge with toothed ridge „straight“ for twin grab swing brake with toothed ridge	SW 351/352/359	35 kg
WK 451.201	Changer cartridge for harvester heads incl. bracket for twin grab swing brake	SW 351/352/359	40 kg
WK 459.001	Changer cartridge for log grapple without toothed ridge	SW 359	39 kg

Type	Quick-coupler linkage 1	For attachment to e.g.:	Dead weight ca.
SK 951.102	Long, angulated for VarioLöffel, mulcher etc.	SW 351/352/359	135 kg
SK 951.301	Short, straight for mulchers etc	SW 359	85 kg

QUICKON

Type	Dead weight ca. (kg)	Coupling sizes (inch)	Note
QO.021.011	3	3/4 - 1 1/4	Couplings are centred in gripping shells
QO.021.011 incl. gripping adapter	3	1/4 - 3/4	Taken up with gripping adapter on screw connection

Holp GmbH

Our focus: Quality, functionality and usability

Holp GmbH is a medium-sized company which developed out of a typical earthworks company founded in 1979 by Franz Holp. Günter Holp, enthusiastic excavator operator and inventor, has continuously developed Holp GmbH as its managing director ever since 1997. Through Holp Wegebau we continue to benefit from over 40 years of experience in this field. We know the requirements of the construction industry and are always oriented towards the needs of the machine operators. With our innovative developments we've been successfully setting standards in the field of attachment tools in Germany and abroad. This results in very high requirements for our products – above all as far as efficiency and recoverability are concerned. New developments must achieve a minimum 25% performance increase. A minimal service life of 5,000 operating hours,

simple mounting, repairs at favourable conditions as well as the possibility of overhauling the products are important key aspects in the construction and design of Holp products. With our advanced attachment tools, we decisively contribute to increasing excavator performance. This enables entrepreneurs to save time, fuel and manual labour and you can work more efficiently. Through close cooperation with our customers, we have a wealth of experience which enables us to continuously develop our products. We provide advice individually and comprehensively because customer satisfaction is our guarantor of success.

“We've got the DNA of an operator and yet think like entrepreneurs.” - Günter Holp



Excavator Tuning SHOP

Please take a quick tour of our Excavator Tuning Shop!
There you can find cool excavator t-shirts, stylish multifunctional scarfs, caps, cups and much more.

shop.holp.eu



Your distributor

© 03/2023 Holp GmbH, all rights reserved. Trademarks and brand names are the property of their respective owners. Any duplication, reproduction or other use without the prior written consent of Holp GmbH is prohibited. Information and technical data are based on the knowledge available at the time of printing. Misprints, errors and changes reserved.



Please feel free to contact us via
vertrieb@holp.eu



Holp GmbH - Im Beundle 1 - D-71540 Murrhardt-Fornsbach